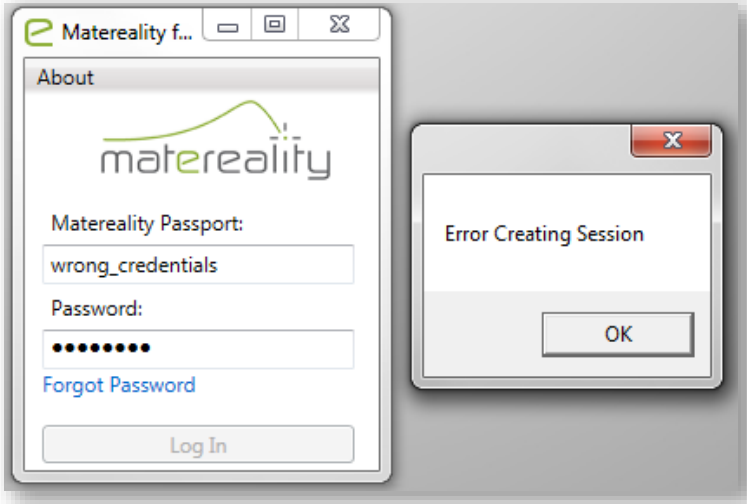


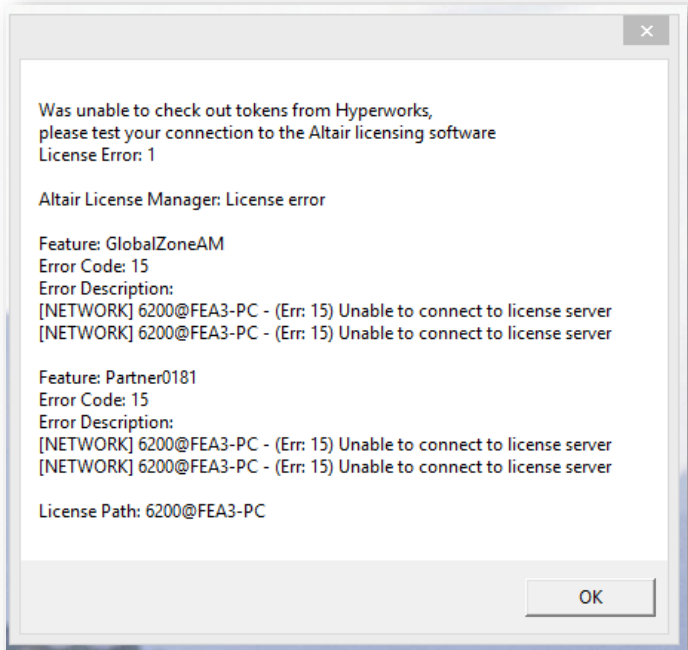
Matereality Workgroup Material DatabasePro for Altair users.

POTENTIAL ERRORS:

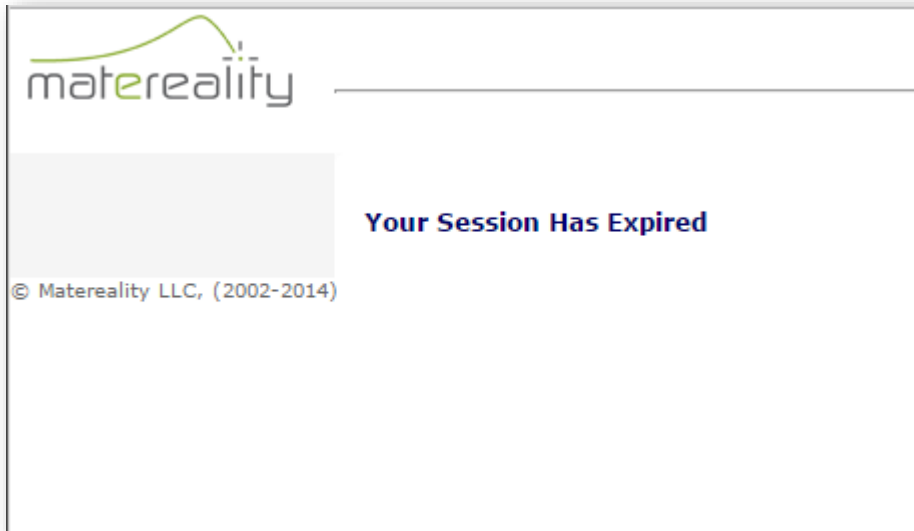
If you enter the wrong credentials, or you do not have a Matereality/Altair account you will get an error similar to this:



If you do not have an Altair license, do not have a running Altair License Server, or do not have a correctly set LMX_LICENSE_PATH system variable, then the application will freeze for some time, before displaying a larger error similar to the following:



The following error will occur if you are an Altair user, attempting to log into Matereality without using the Matereality for Altair users desktop application. Also, while unlikely, the following error could be caused by an error with your license server, or the desktop application.



For more information, please send any questions or comments to support@matereality.com